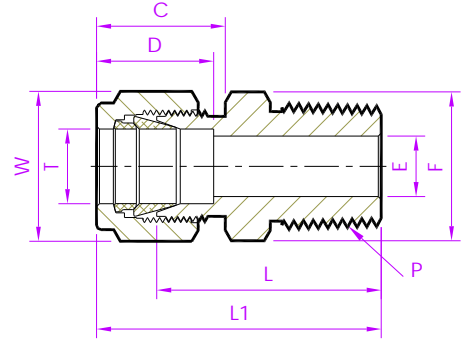
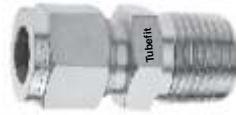


- Tube Fitting (Double Ferrule)-
Tube To Male Pipe Thread



Male Connector

Fractional Tube x ISO Tapered (M)

TubeFit Part No.	Equivalent Part No. Type 1	Equivalent Part No. Type 2	TUBE OD Ø T	ISO Male Pipe Size P	ØE	D	C	L	L1	Body Hex F	Nut Hex W
Dimensions in Inches											
1 - MCD - 1IT	- 100 - 1 - 1RT	1MSC1IT	1/16	1/16	0.05	0.34	0.43	0.79	0.94	5/16	5/16
1 - MCD - 2IT	- 100 - 1 - 2RT	1MSC2IT		1/8	0.05			0.88	1.03	7/16	
1 - MCD - 4IT	- 100 - 1 - 4RT	1MSC4IT		1/4	0.05			1.07	1.22	9/16	
2 - MCD - 1IT	- 200 - 1 - 1RT	2MSC1IT	1/8	1/16	0.09	0.50	0.60	0.91	1.17	7/16	7/16
2 - MCD - 2IT	- 200 - 1 - 2RT	2MSC2IT		1/8	0.09			0.94	1.20	7/16	
2 - MCD - 4IT	- 200 - 1 - 4RT	2MSC4IT		1/4	0.09			1.14	1.40	9/16	
2 - MCD - 6IT	- 200 - 1 - 6RT	2MSC6IT		3/8	0.09			1.15	1.41	11/16	
2 - MCD - 8IT	- 200 - 1 - 8RT	2MSC8IT		1/2	0.09			1.40	1.66	7/8	
3 - MCD - 1IT	- 300 - 1 - 1RT	3MSC1IT	3/16	1/16	0.12	0.54	0.63	0.97	1.23	7/16	1/2
3 - MCD - 2IT	- 300 - 1 - 2RT	3MSC2IT		1/8	0.12			0.97	1.23	7/16	
3 - MCD - 4IT	- 300 - 1 - 4RT	3MSC4IT		1/4	0.12			1.17	1.43	9/16	
4 - MCD - 1IT	- 400 - 1 - 1RT	4MSC1IT	1/4	1/16	0.12	0.60	0.70	1.00	1.29	1/2	9/16
4 - MCD - 2IT	- 400 - 1 - 2RT	4MSC2IT		1/8	0.19			1.00	1.29	1/2	
4 - MCD - 4IT	- 400 - 1 - 4RT	4MSC4IT		1/4	0.19			1.20	1.49	9/16	
4 - MCD - 6IT	- 400 - 1 - 6RT	4MSC6IT		3/8	0.19			1.22	1.51	11/16	
4 - MCD - 8IT	- 400 - 1 - 8RT	4MSC8IT		1/2	0.19			1.47	1.76	7/8	
4 - MCD - 12IT	- 400 - 1 - 12RT	4MSC12IT		3/4	0.19			1.53	1.82	1.1/16	
5 - MCD - 2IT	- 500 - 1 - 2RT	5MSC2IT	5/16	1/8	0.19	0.64	0.73	1.05	1.34	5/8	5/8
5 - MCD - 4IT	- 500 - 1 - 4RT	5MSC4IT		1/4	0.25			1.23	1.52	5/8	
5 - MCD - 6IT	- 500 - 1 - 6RT	5MSC6IT		3/8	0.25			1.25	1.54	11/16	
5 - MCD - 8IT	- 500 - 1 - 8RT	5MSC8IT		1/2	0.25			1.50	1.79	7/8	
6 - MCD - 2IT	- 600 - 1 - 2RT	6MSC2IT	3/8	1/8	0.19	0.66	0.76	1.10	1.39	11/16	11/16
6 - MCD - 4IT	- 600 - 1 - 4RT	6MSC4IT		1/4	0.28			1.28	1.57	11/16	
6 - MCD - 6IT	- 600 - 1 - 6RT	6MSC6IT		3/8	0.28			1.28	1.57	11/16	
6 - MCD - 8IT	- 600 - 1 - 8RT	6MSC8IT		1/2	0.28			1.53	1.82	7/8	
6 - MCD - 12IT	- 600 - 1 - 12RT	6MSC12IT		3/4	0.28			1.59	1.88	1.1/16	
8 - MCD - 2IT	- 810 - 1 - 2RT	8MSC2IT	1/2	1/8	0.19	0.90	0.86	1.13	1.53	13/16	7/8
8 - MCD - 4IT	- 810 - 1 - 4RT	8MSC4IT		1/4	0.28			1.31	1.71	13/16	
8 - MCD - 6IT	- 810 - 1 - 6RT	8MSC6IT		3/8	0.38			1.31	1.71	13/16	
8 - MCD - 8IT	- 810 - 1 - 8RT	8MSC8IT		1/2	0.41			1.53	1.93	7/8	
8 - MCD - 12IT	- 810 - 1 - 12RT	8MSC12IT		3/4	0.41			1.59	1.99	1.1/16	
8 - MCD - 16IT	- 810 - 1 - 16RT	8MSC16IT		1	0.41			1.85	2.25	1.3/8	
10 - MCD - 6IT	- 1010 - 1 - 6RT	10MSC6IT	5/8	3/8	0.38	0.96	0.86	1.34	1.74	1	1
10 - MCD - 8IT	- 1010 - 1 - 8RT	10MSC8IT		1/2	0.47			1.53	1.93	1	
10 - MCD - 12IT	- 1010 - 1 - 12RT	10MSC12IT		3/4	0.50			1.59	1.99	1.1/16	
12 - MCD - 8IT	- 1210 - 1 - 8RT	12MSC8IT		1/2	0.47			1.59	1.99	1.1/16	
12 - MCD - 12IT	- 1210 - 1 - 12RT	12MSC12IT	3/4	3/4	0.62	0.96	0.86	1.59	1.99	1.1/16	1.1/8
12 - MCD - 16IT	- 1210 - 1 - 16RT	12MSC16IT		1	0.62			1.85	2.25	1.3/8	
14 - MCD - 12IT	- 1410 - 1 - 12RT	14MSC12IT	7/8	3/4	0.62	1.02	0.86	1.59	1.99	1.3/16	1.1/4
14 - MCD - 16IT	- 1410 - 1 - 16RT	14MSC16IT		1	0.72			1.85	2.25	1.3/8	
16 - MCD - 8IT	- 1610 - 1 - 8RT	16MSC8IT	1	1/2	0.47	1.23	1.04	1.78	2.26	1.3/8	1.1/2
16 - MCD 12IT	- 1610 - 1 - 12RT	16MSC12IT		3/4	0.62			1.78	2.26	1.3/8	
16 - MCD - 16IT	- 1610 - 1 - 16RT	16MSC16IT		1	0.88			1.97	2.45	1.3/8	
20 - MCD - 16IT	- 2000 - 1 - 16RT	20MSC16IT	1.1/4	1	0.88	1.62	1.53	2.17	3.04	1.3/4	1.7/8
20 - MCD - 20IT	- 2000 - 1 - 20RT	20MSC20IT		1.1/4	1.09			2.17	3.04	1.3/4	
24 - MCD - 24IT	- 2400 - 1 - 24RT	24MSC24IT	1.1/2	1.1/2	1.34	1.97	1.78	2.43	3.50	2.1/8	2.1/4
32 - MCD - 32IT	- 3200 - 1 - 32RT	32MSC32IT	2	2	1.81	2.66	2.47	3.00	4.47	2.3/4	3

NOTE: 1)The E Dimension is the minimum opening & fittings of this group may be back drilling to larger ID at pipe thread or straight thread end.
2)Dimension L1, C, D is shown in the finger-tight position. 3)Dimensions are for reference only and are subject to change 4)ISO Tapered (BSP) thread as per BS 21.

- ALL PART NUMBERS ARE PROPRIETARY OF THEIR RESPECTIVE OWNERS. -